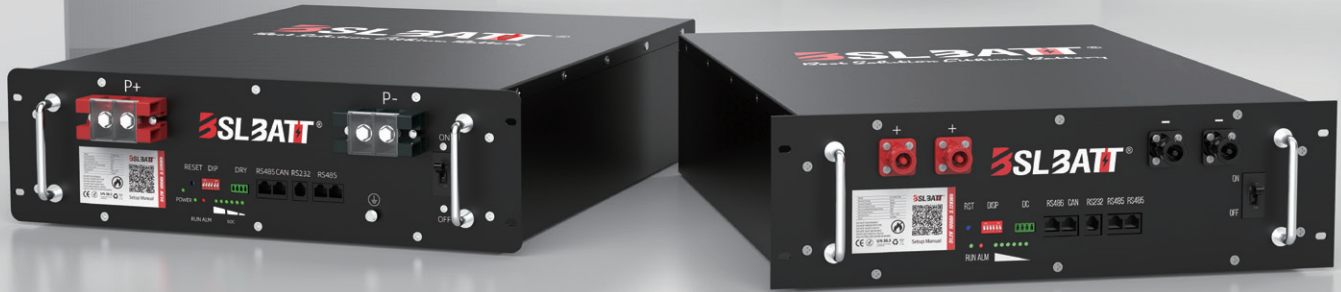


B-LFP48-100E 3U

Parallel capacity from 5.12 kWh to 322.56 kWh



B-LFP48-100E 3U 51.2V 5.12kWh with 100AH internal BMS. Composed of (16) UL listed prismatic 3.2V LiFePO4 cells in series which have been tested at 6000 deep discharge cycles to 80% DoD - fully charge and discharge this battery daily for over 15 years without issue.



Modular and scalable



More compact design



Better price, bigger capacity



10-year warranty & technical support



30 days delivery period



For on-grid and off-grid



UL standard battery pack



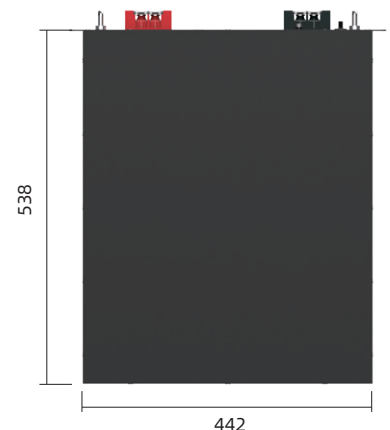
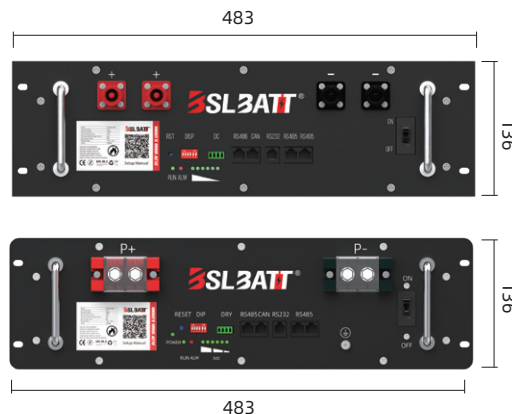
High cycle life and deep cycle capability



Safe and reliable LiFePO4



483



Technical Specifications

Specification

Item	General Parameter	
Model	B-LFP48-100E 3U	
Charge Voltage	DC 58.4V	
Nominal Voltage	51.2V	
Nominal Capacity	100Ah	
Energy	5.12KWh	
Charge Current	Standard charge: 0.5C Approx 3 Hours / Rapid charge: 1C Approx 1.5 Hours	
Standard Charging Method	0.5C.CC (constant current) charge to 58.4V, then CV(constant voltage 58.4V) charge till charge current decline to 0.05C	
Max. Charge Current	50A	
Max. Discharge Current	120A / 150A	
Max. Pulse Current	150A(300ms)	
Discharge Cut-off Voltage	40V	
Cell & Method	16S2P	
Operating Temperature	Charging	0°C ~ 45°C
	Discharging	-20°C ~55°C
Storage Temperature	- 10°C ~ + 45°C	
Battery Weight	Approx: 46 kg	
Battery Dimension	538*483(442)*136mm(W*H*D)	
Battery Outgoing Voltage	~52.5V	

Certification

Safety	CE/UN38.3
Cell	IEC62619/UL1973/CE
Hazardous Materials Classification	Class 9
Transportation	UN38.3
Protection Level	IP 54