

SOLAR COMPACT

2) PARTS INDEX

Main figure

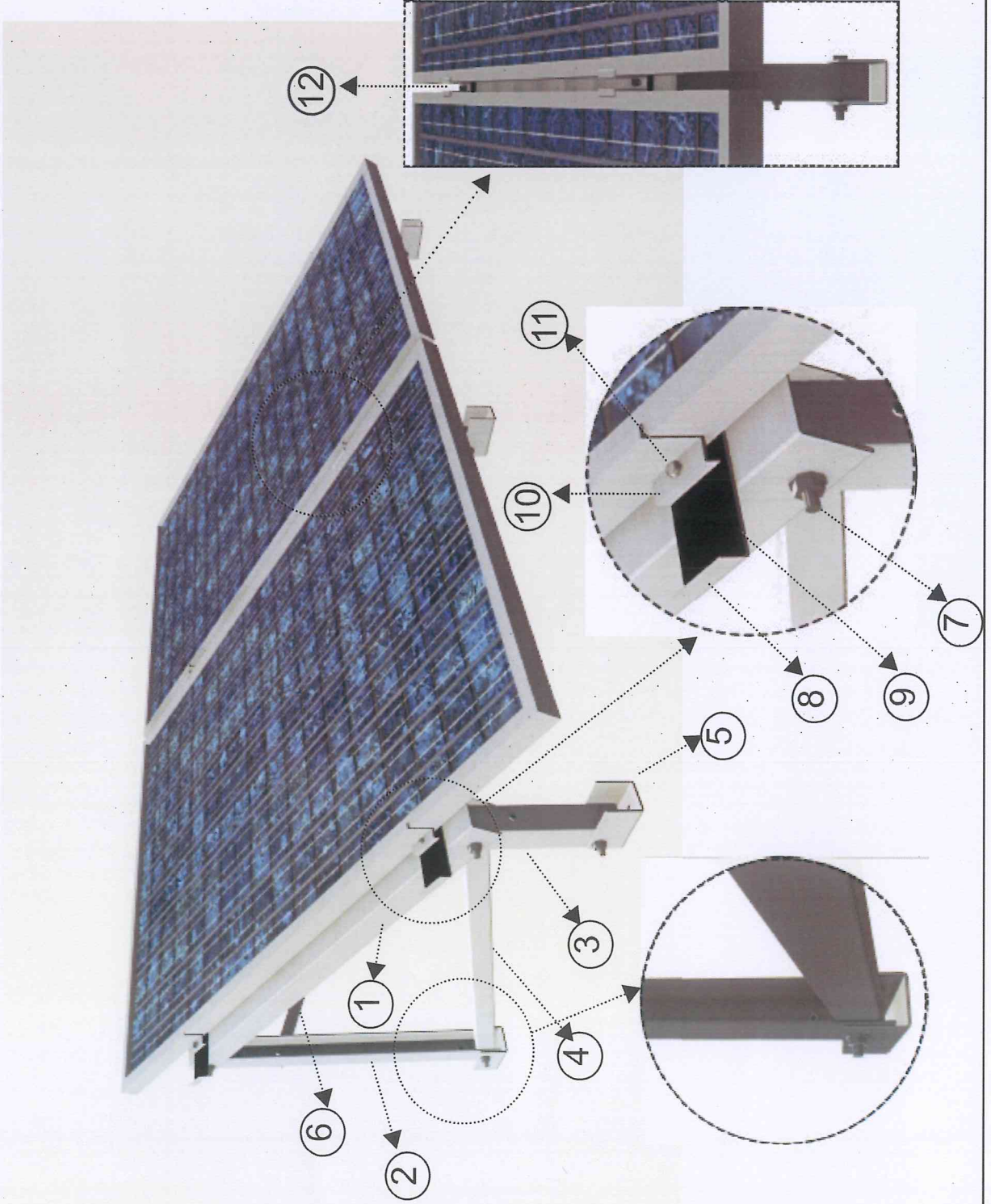
1. HEAD BEAM
2. REAR FOOT
3. FRONT FOOT
4. BRACING ELEMENT
5. FOOTING
6. LATERAL BRACING

Detail 1

7. M8 BOLT, WASHER AND NUT
8. ALIGNMENT PART
9. EPDM PAD
10. END CLAMP
11. M8 ALLENHEAD BOLT

Detail 2

12. MIDDLE (Ω) CLAMP



SOLAR COMPACT SYSTEM COMPONENTS

HEAD BEAM



REAR FOOT



FRONT FOOT



BRACING ELEMENT



LATERAL BRACING



FOOTING



X 2

END CLAMP (Z)



ORDER SEPARATELY!

MIDDLE CLAMP (Ω)



X 2

EPDM PAD



X 2

M8 ALLEN BOLT-NYLOCK NUT-WASHERS



X 2

M8 BOLT - SPRING WASHER



X 4

ALIGNMENT PART



X 2

Dimensions and Quantities

The exact quantities and dimensions of the system components are project specific and determined by the PV layout and the statical calculations. All quantities and dimensions are provided in the "Mounting System Drawing (DT01)" and "Order (MO)" documents provided for the specific project by SolarCube.

3) SYSTEM COMPONENTS

Required Tools



• M8 Allen key



• M8 torque wrench / hand wrench



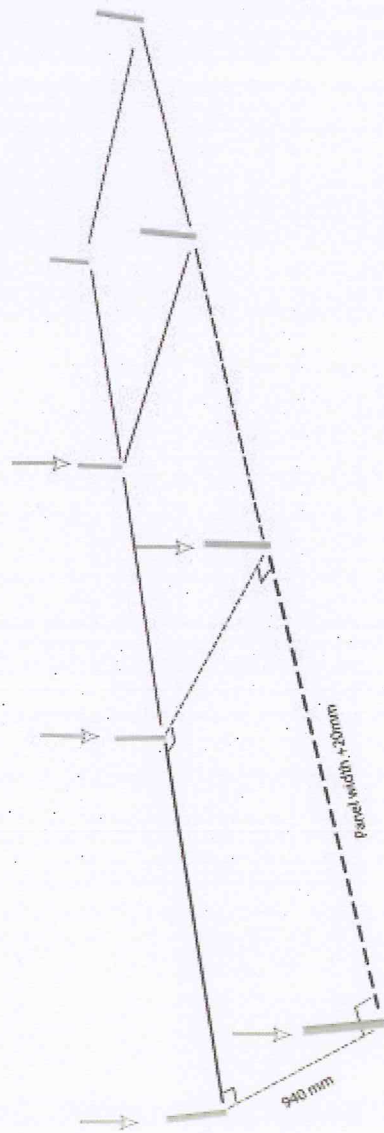
ATTENTION!

OBJECTS NOT TO SCALE!
ACTUAL PARTS MAY DIFFER
FROM PROJECT TO PROJECT!

Step 1:

Place the anchoring elements.

Fix the M8 - M10 chemical (recommended) or mechanical anchors, following the manufacturer's recommendations, according to the pattern depicted in the figure below.



The east-west anchor distance is given by the "PV module width + 20mm" and the north-south is given by "anchor to anchor = 940mm" for a 25° tilt model.



NOTE!

- Always keep right angles between the east - west and the south - east imaginary lines connecting the anchoring points.
- Always make sure that the anchoring points are correctly located before you start drilling. Try the fit of a single unit before you proceed.
- Anchoring elements are not provided by SolarCube.

4) INSTALLATION INSTRUCTIONS



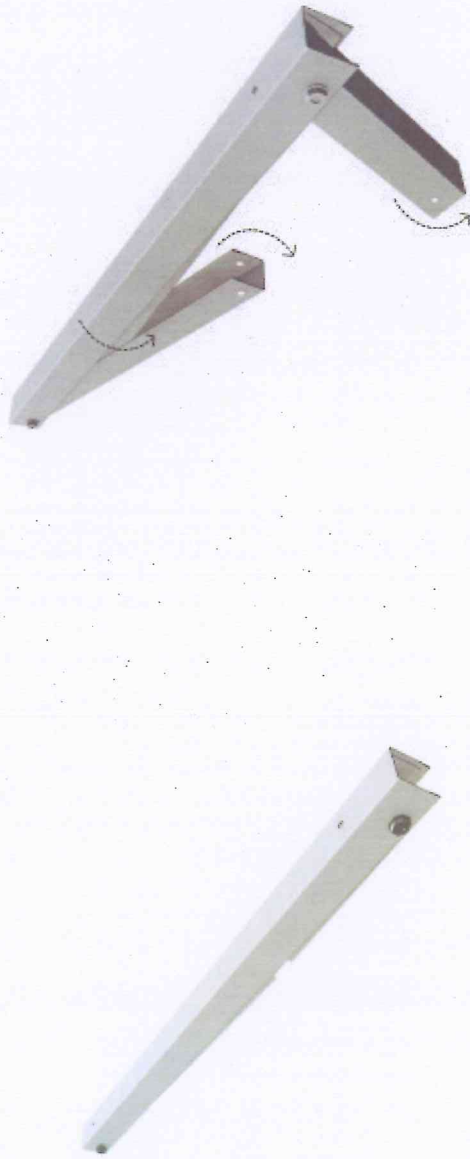
ATTENTION!

Ensure the suitability of the roof in terms of static ability, and in conjunction with the selected anchoring method before you order the system or start the installation.

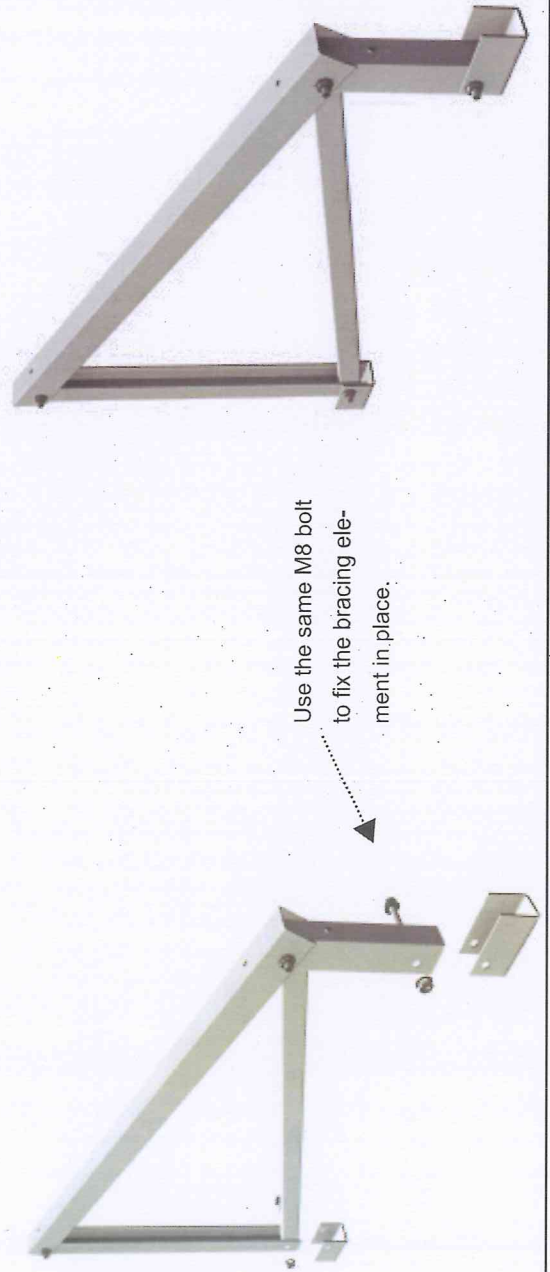
Step 2:

Unfold and attach the footings

A) Unfold the front and rear legs and the bracing element from the delivered folded structure.



B) Attach the footings on the front and rear feet. Place the mounting structure on the anchoring elements and fix according to manufacturer's instructions.



**4) INSTALLATION
INSTRUCTIONS**



ATTENTION!

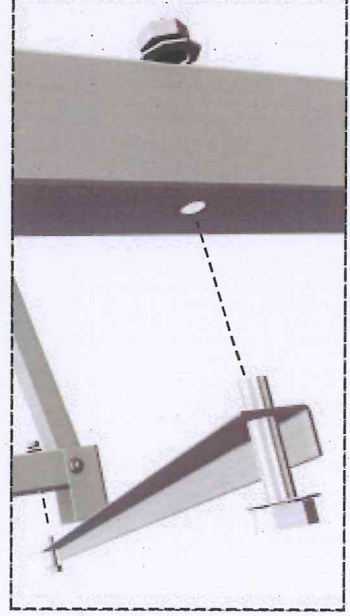
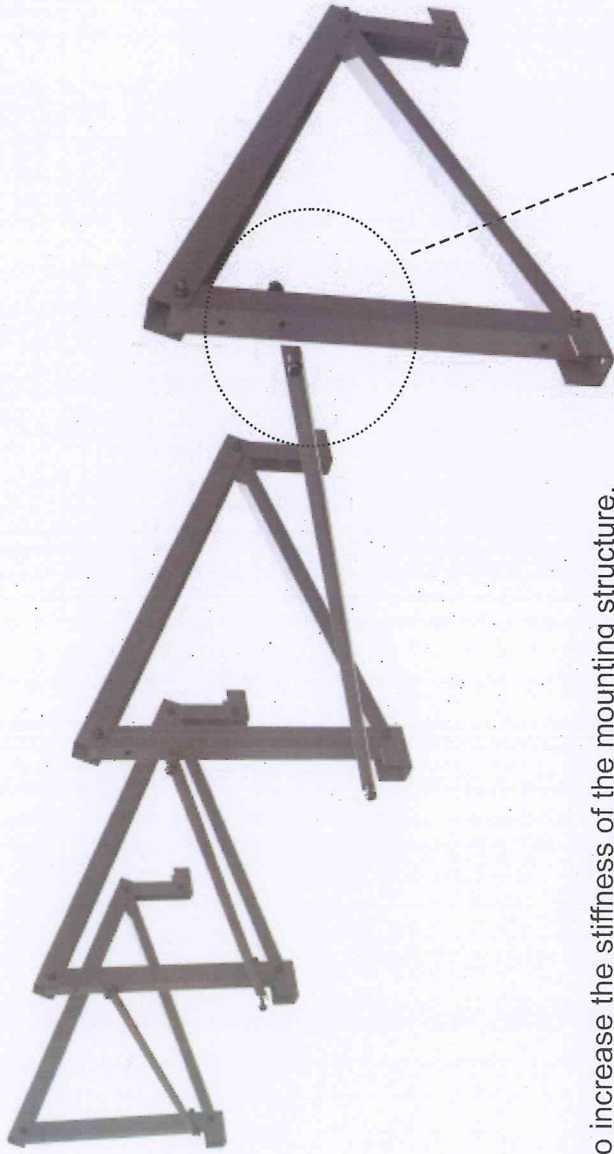
Do not tighten any bolts of the mounting structure at this step.

Do not disassemble the folded structure.

The tilt of the mounting structure is set to 25°.

Step 3:

Add the lateral bracing elements.

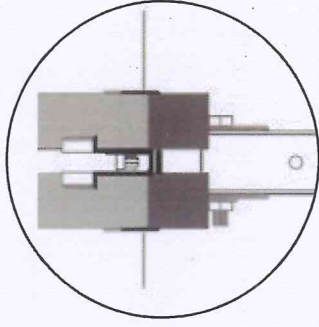
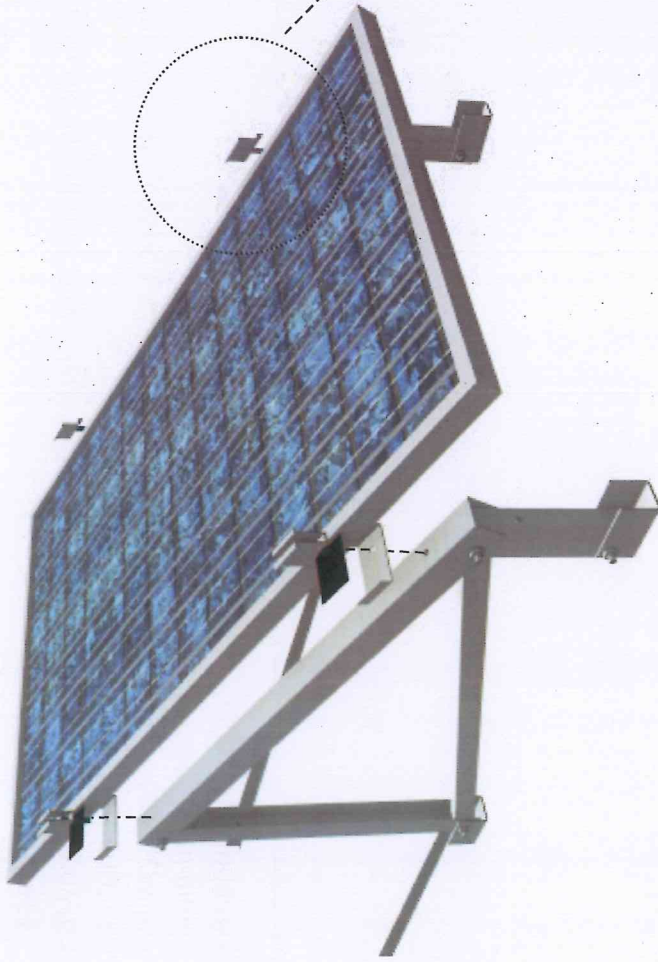


In order to increase the stiffness of the mounting structure, attach the lateral bracing element as indicated in the figure.

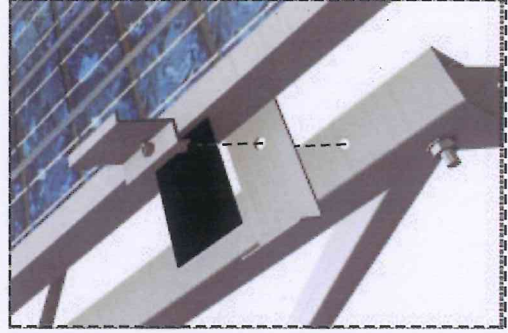


Step 4:

Placement of the PV modules.



Middle clamp - section



Use end clamps at the beginning and end of the rows, and middle clamps in the middle of the rows.

4) INSTALLATION INSTRUCTIONS



ATTENTION!

Always place an EPDM pad between the frame of the PV module and the mounting structure to avoid galvanic corrosion.

Tighten all bolts at this step using a torque wrench. Recommended torque for the allenhead bolts is 8-10 Nm and 3-5 Nm for all other bolts.

Clamp Placement

Make sure that there is sufficient contact area between the PV module and the clamp

WRONG!



